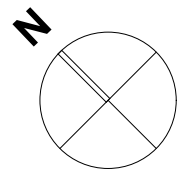
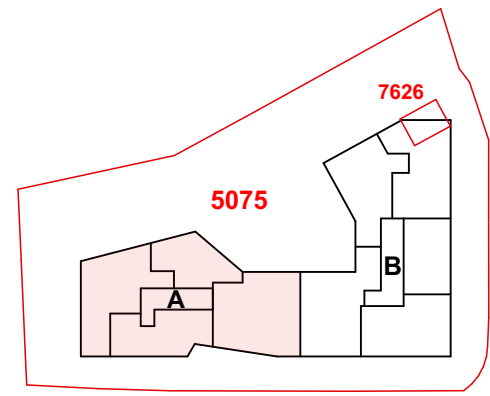


**A.0.1
Studio**

**A.0.2
Studio**

652 ABBE GREMAUD

Plan : PPE : Cage A - Rez - Studios
Date : 04.09.2020
Modifications :
Format : A3 / sans échelle



A.1.1
A.2.1
A.3.1
3.5P

A.1.4
A.2.4
A.3.4
2.5P

| Appartement A.x.3 | 4.5P |
|-------------------------------|-----------------------------|
| Séjour / cuisine | 47.28 m ² |
| Chambre 1 | 15.15 m ² |
| Chambre 2 | 16.52 m ² |
| Chambre 3 | 13.03 m ² |
| Bain | 6.83 m ² |
| Douche | 5.13 m ² |
| Total | 103.94 m² |
| Loggia | 7.31 m ² |
| Balcon | 6.28 m ² |
| Surface de vente nette | 112.81 m² |

| Appartement A.x.4 | 2.5P |
|-------------------------------|----------------------------|
| Séjour / cuisine | 36.53 m ² |
| Chambre 1 | 14.12 m ² |
| Bain | 5.78 m ² |
| Total | 56.43 m² |
| Balcon | 11.43 m ² |
| Surface de vente nette | 62.94 m² |

| Appartement A.x.1 | 3.5P |
|-------------------------------|----------------------------|
| Séjour / cuisine | 40.79 m ² |
| Chambre 1 | 16.41 m ² |
| Chambre 2 | 12.17 m ² |
| Bain | 5.92 m ² |
| Douche | 4.61 m ² |
| Circulation | 5.40 m ² |
| Total | 85.30 m² |
| Loggia | 6.40 m ² |
| Surface de vente nette | 90.19 m² |

| Appartement A.x.2 | 2.5P |
|-------------------------------|----------------------------|
| Séjour / cuisine | 42.41 m ² |
| Chambre 1 | 13.65 m ² |
| Bain | 6.16 m ² |
| Total | 62.22 m² |
| Loggia | 7.25 m ² |
| Surface de vente nette | 66.75 m² |

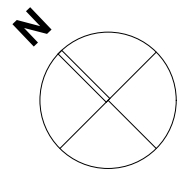
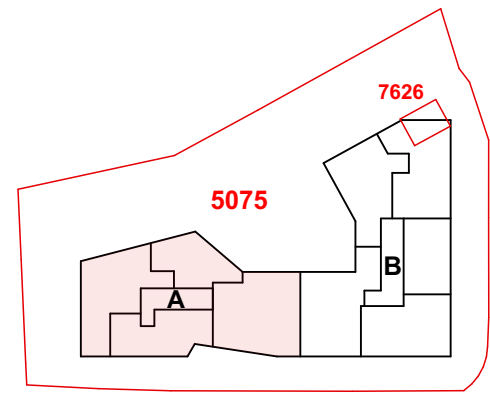


A.1.2
A.2.2
A.3.2
2.5P

A.1.3
A.2.3
A.3.3
4.5P

652 ABBE GREMAUD

Plan : PPE : Cage A - Etage 1 à 3
Date : 27.04.2021
Modifications :
Format : A3 / sans échelle

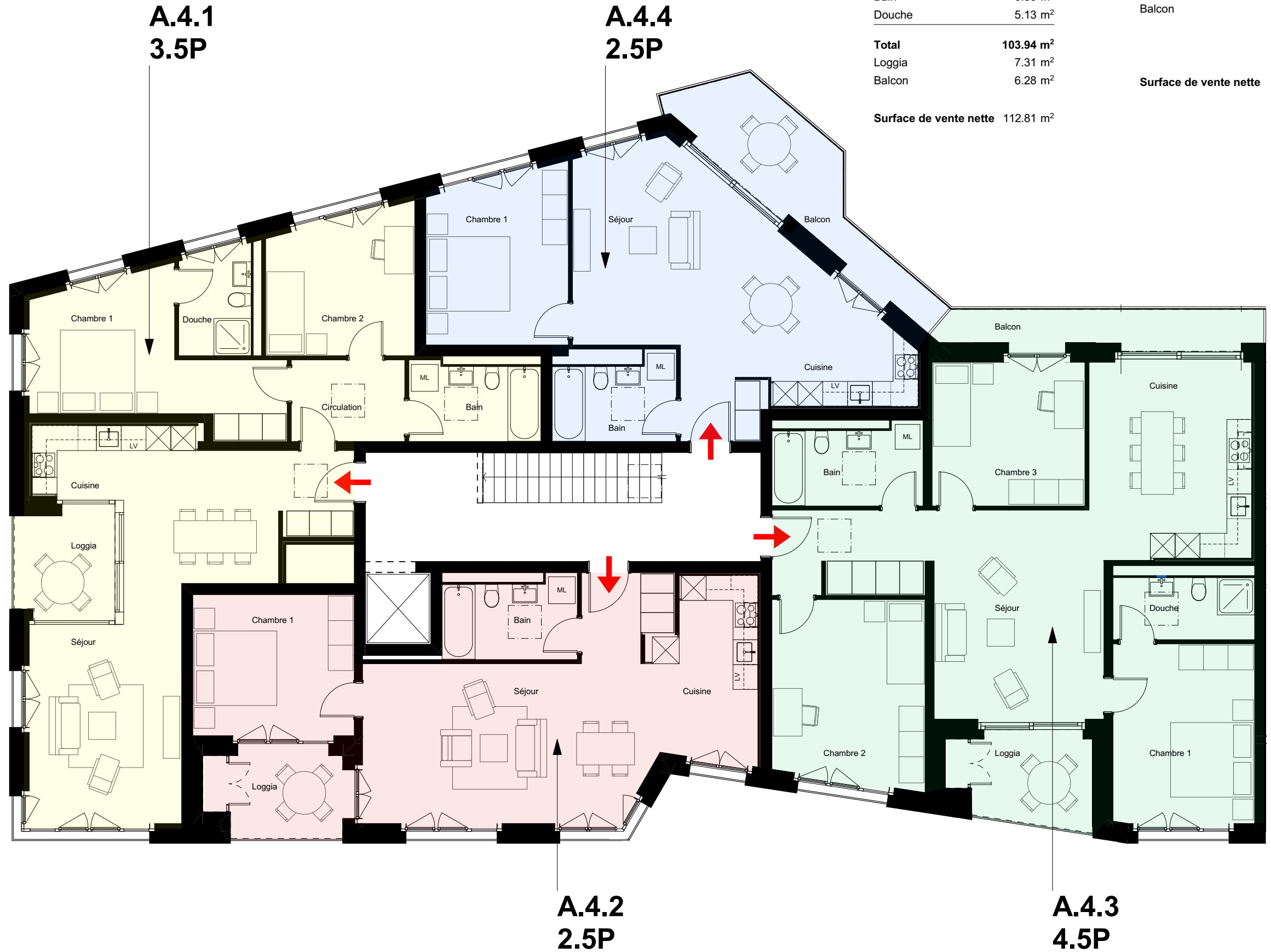


| Appartement A.4.3 | 4.5P |
|-------------------------------|-----------------------------|
| Séjour / cuisine | 47.28 m ² |
| Chambre 1 | 15.15 m ² |
| Chambre 2 | 16.52 m ² |
| Chambre 3 | 13.03 m ² |
| Bain | 6.83 m ² |
| Douche | 5.13 m ² |
| Total | 103.94 m² |
| Loggia | 7.31 m ² |
| Balcon | 6.28 m ² |
| Surface de vente nette | 112.81 m² |

| Appartement A.4.4 | 2.5P |
|-------------------------------|----------------------------|
| Séjour / cuisine | 36.53 m ² |
| Chambre 1 | 14.12 m ² |
| Bain | 5.78 m ² |
| Total | 56.43 m² |
| Balcon | 11.43 m ² |
| Surface de vente nette | 62.94 m² |

| Appartement A.4.1 | 3.5P |
|-------------------------------|----------------------------|
| Séjour / cuisine | 40.79 m ² |
| Chambre 1 | 16.41 m ² |
| Chambre 2 | 12.17 m ² |
| Bain | 5.92 m ² |
| Douche | 4.61 m ² |
| Circulation | 5.40 m ² |
| Total | 85.30 m² |
| Loggia | 6.40 m ² |
| Surface de vente nette | 90.19 m² |

| Appartement A.4.2 | 2.5P |
|-------------------------------|----------------------------|
| Séjour / cuisine | 42.41 m ² |
| Chambre 1 | 13.65 m ² |
| Bain | 6.16 m ² |
| Total | 62.22 m² |
| Loggia | 7.25 m ² |
| Surface de vente nette | 66.75 m² |



652 ABBE GREMAUD

Plan : PPE : Cage A - Etage 4
 Date : 27.04.2021
 Modifications :
 Format : A3 / sans échelle